

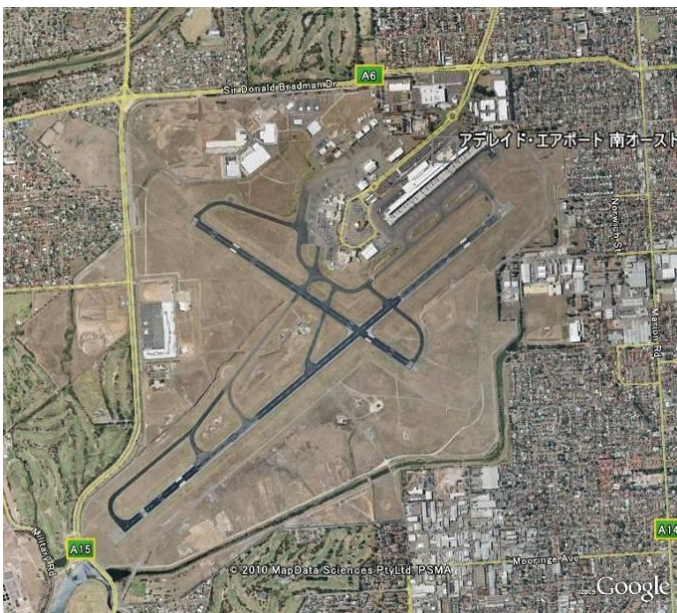
Airport Coordination Australia (ACA)



Head Coordinator	
Name	Ernst J. Krolke
Title	Chief Executive Officer
Affiliation	Airport Coordination Australia
Address	PO Box 3047, Sydney International Airport, NSW 2020
TEL	+61 2 9313 5469
FAX	+61 2 9313 4210
E-mail	ejkrolke@coordaus.com.au

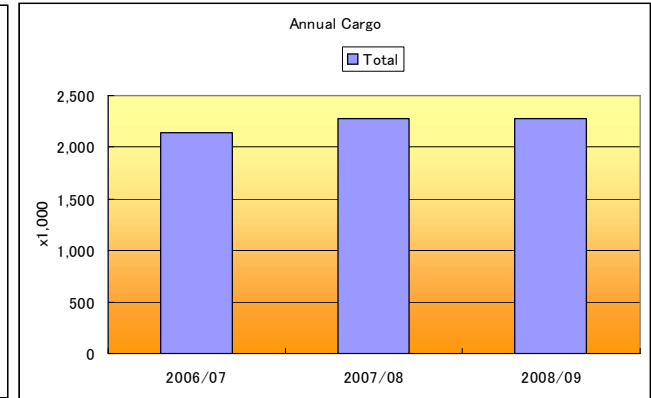
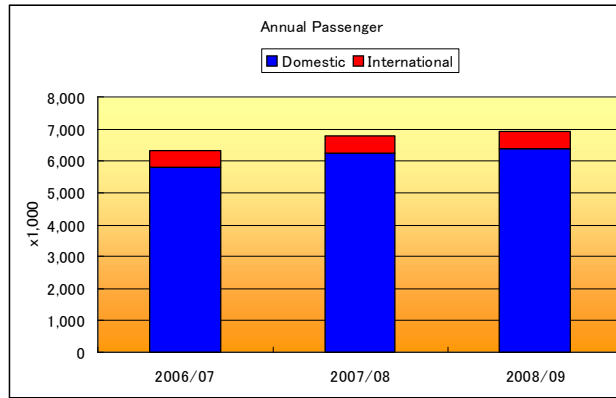
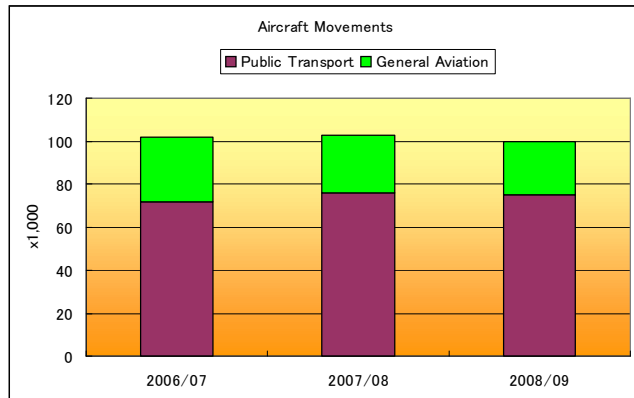
	Airport Name	Code	TTY	E-mail	Web Site
Level 3	Adelaide	ADL	HDQACXH	slots@coordaus.com.au	www.coordaus.com.au
	Brisbane	BNE	HDQACXH	slots@coordaus.com.au	www.coordaus.com.au
	Cairns	CNS	HDQACXH	slots@coordaus.com.au	www.coordaus.com.au
	Darwin	DRW	HDQACXH	slots@coordaus.com.au	www.coordaus.com.au
	Melbourne	MEL	HDQACXH	slots@coordaus.com.au	www.coordaus.com.au
	Gold Coast	OOL	HDQACXH	slots@coordaus.com.au	www.coordaus.com.au
	Perth	PER	HDQACXH	slots@coordaus.com.au	www.coordaus.com.au
	Sydney	SYD	HDQACXH	slots@coordaus.com.au	www.coordaus.com.au
Level 2	Hobart	HBA	HDQACXH	slots@coordaus.com.au	www.coordaus.com.au
	Norfolk Island	NLK	HDQACXH	slots@coordaus.com.au	www.coordaus.com.au
	Port Hedland	PHE	HDQACXH	slots@coordaus.com.au	www.coordaus.com.au
	Townsville	TSV	HDQACXH	slots@coordaus.com.au	www.coordaus.com.au

Adelaide Airport (Australia)



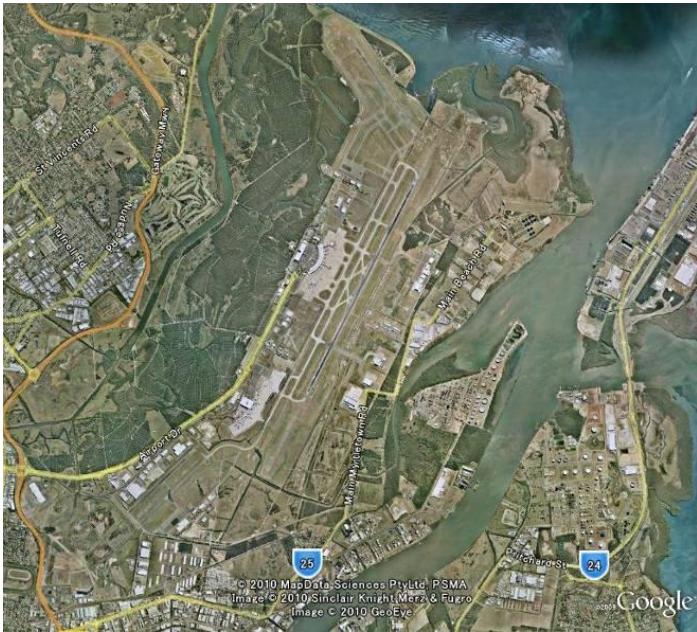
Airport Name	Adelaide Airport (IATA: ADL, ICAO: YPAD)		
Airport Location	6 km / 3.7 miles west of city centre		
Airport Coordinate	34 56.42S 138 31.5E		
Runways	A runway	05/23	3,100m (10,171ft)
	B runway	12/30	1,652m (5,420ft)
Curfew:	23:00 local – 06:05 local		
Passenger Terminal	Terminal 1	Domestic & International Common User Terminal. International Maximum 4 gates, Domestic 8 up to 16 if no Internationals. 14 Gates with Bridges. 12 bussing positions for DH4 to SWM aircraft International Passenger limitation: 800 arriving seats/hr, 650 departing seats/hr	
Airport Parking	1 layover position up to 744.		

Adelaide Airport (Australia)



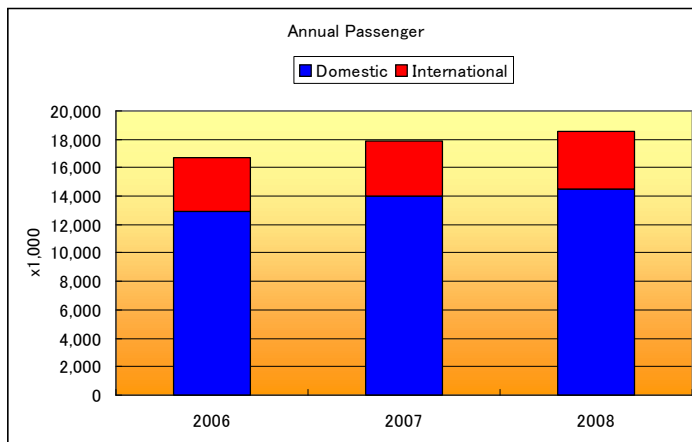
	FY (July 1- 30June)	2006/07	2007/08	2008/09
Aircraft Movements (Thousand)	Public Transport	72	76	75
	General Aviation	30	27	25
	Total	102	103	100
Annual Passenger (Thousand)	Domestic	5,805	6,240	6,393
	International	496	542	543
	Total	6,301	6,782	6,936
Annual Cargo (Thousand)	Domestic	n/a	n/a	n/a
	International	n/a	n/a	n/a
	Total	2,142	2,276	2,283

Brisbane Airport (Australia)



Airport Name	Brisbane Airport (IATA: BNE, ICAO: YBBN)		
Airport Location	13 km north east of city center		
Airport Coordinate	27 23.0S 153 07.05E		
Runways	A runway	01/19	3,560m (11,680ft)
	B runway	14/32	1,700m (5,577ft)
Passenger Terminal	International Terminal	13/14 (2 A380s or 4 A320s) parking bays, 10 gates have bridges Passenger flow limitation: 2000 arriving seats/hr, 1900 departing seats/hr	
	Domestic Terminal	Qantas: 9 gates with bridges, 8 bus positions Virgin Blue: 8 gates with bridges Common User: 2 gates with bridges, 5 walk positions Passenger flow limit for Common User: 900 arriving and 900 departing seats/hr	
Airport Parking	International: 3 layover positions, Domestic: 4 layover position		

Brisbane Airport (Australia)



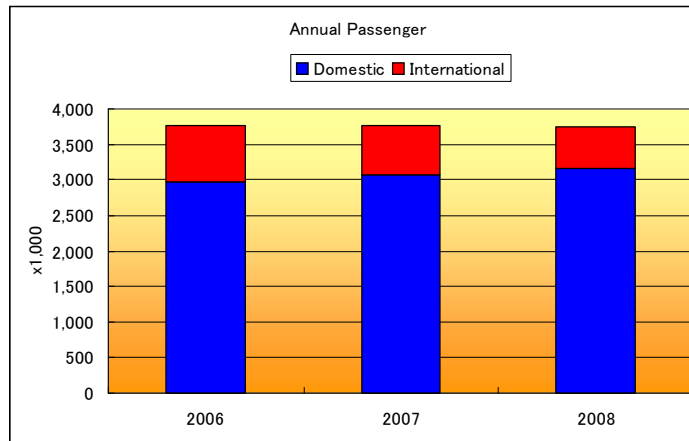
		2006	2007	2008
Aircraft Movements (Thousand)	Domestic	n/a	n/a	n/a
	International	23.722	25.078	26.564
	Total	n/a	n/a	n/a
Annual Passenger (Thousand)	Domestic	12,943	13,972	14,548
	International	3,763	3,922	4,036
	Total	16,706	17,894	18,584
Annual Cargo (Thousand)	Domestic	n/a	n/a	n/a
	International	n/a	n/a	n/a
	Total	n/a	n/a	n/a

Cairns Airport (Australia)



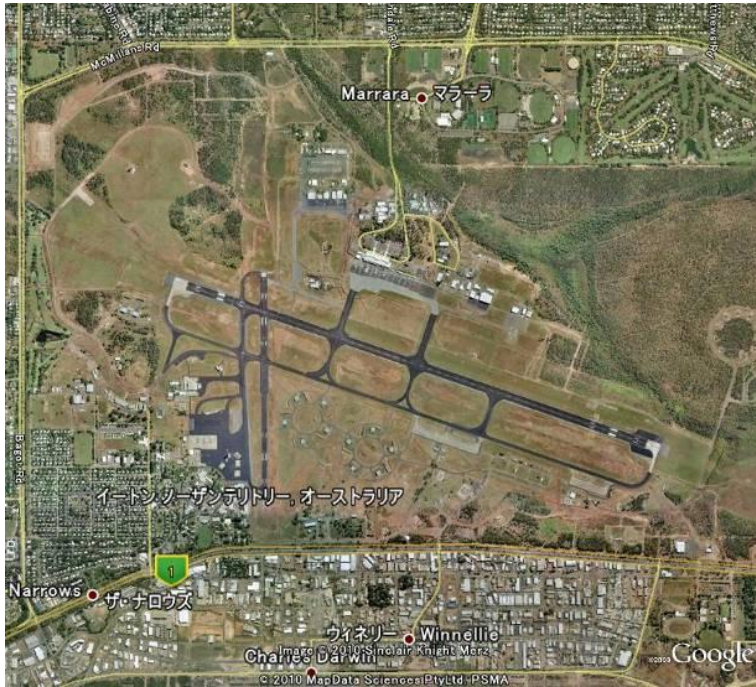
Airport Name	Cairns Airport (IATA: CNS, ICAO: YBCS)		
Airport Location	6km north of city center		
Airport Coordinate	16 52.29S 145 45.08E		
Runways	A runway	15/33	3,196m (10,486ft)
	B runway	12/30	925m (3,035ft)
Passenger Terminal	International Terminal	6 gates up to 744 with bridges 2 position up to 767 walk up 2 positions up to DH3 bus	
	Domestic Terminal	5 air bridges 10 positions bus/walk	
Airport Parking	Included in above		

Cairns Airport (Australia)



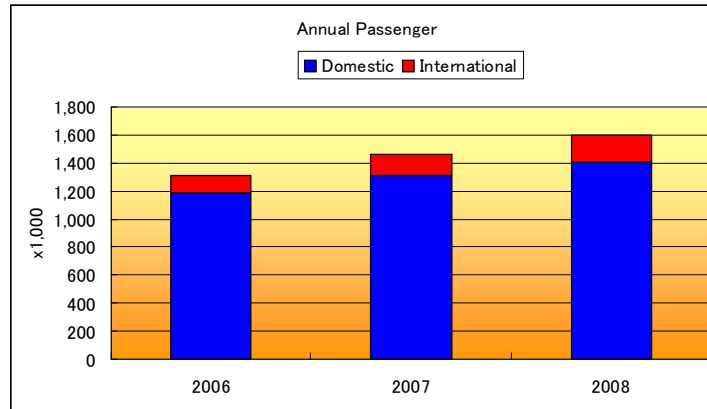
		2006	2007	2008
Aircraft Movements (Thousand)	Domestic	n/a	n/a	n/a
	International	5,496	9,582	8,212
	Total	n/a	n/a	n/a
Annual Passenger (Thousand)	Domestic	2,967	3,066	3,153
	International	792	702	596
	Total	3,759	3,768	3,749
Annual Cargo (Thousand)	Domestic	n/a	n/a	n/a
	International	n/a	n/a	n/a
	Total	n/a	n/a	n/a

Darwin Airport (Australia)



Airport Name	Darwin International Airport (IATA: DRW, ICAO: YPDN)		
Airport Location	7km north east of city center		
Airport Coordinate	12 24.53S 130 52.36E		
Runways	A runway	11/29	3,354m (11,004ft)
	B runway	18/36	1,524m (5,000ft)
Passenger Terminal	Terminal 1	Common User International and Domestic. International: 2 Gates up to 744, 1 bridge, 1 walk Passenger Flow limitation: 350 arriving seats and 200 departing seats/hr Domestic: 10 gates, 3 bridges and 7 walk	
Airport Parking	Included in above		

Darwin Airport (Australia)



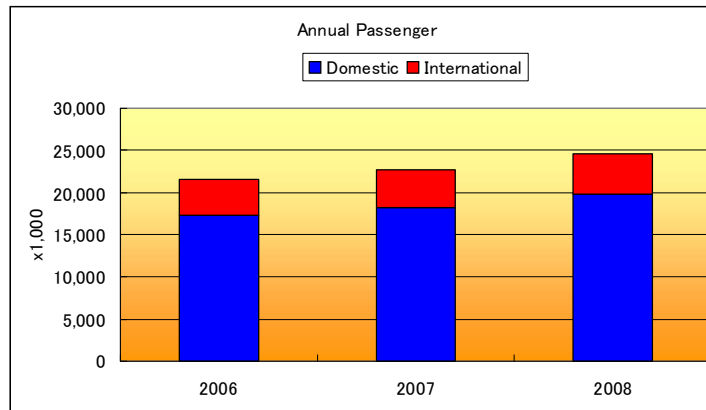
		2006	2007	2008
Aircraft Movements (Thousand)	Domestic	n/a	n/a	n/a
	International	4.662	4.080	5.910
	Total	n/a	n/a	n/a
Annual Passenger (Thousand)	Domestic	1,186	1,312	1,409
	International	127	151	188
	Total	1,313	1,463	1,597
Annual Cargo (Thousand)	Domestic	n/a	n/a	n/a
	International	n/a	n/a	n/a
	Total	n/a	n/a	n/a

Melbourne Airport (Australia)



Airport Name	Melbourne Airport (IATA: MEL, ICAO: YMML)		
Airport Location	19km north west of city center		
Airport Coordinate	37 40.24S 144 50.36E		
Runways	A runway	16/34	3,657m (11,998ft)
	B runway	09/27	2,286m (7,500ft)
Passenger Terminal	Terminal 1	Domestic services for Qantas Group airlines 15 gates with bridges, 4 gates (walk) up to DH4	
	Terminal 2	22 gates up to 4 388, 3 Freight positions Passenger Flow Limitation: 2300 arriving and 2515 departing seats/hr	
	Terminal 3	Virgin Blue and Regional Express, 12 single aerobridges and 8 parking bays (walk)	
	Terminal 4	Tiger Australia, 5 positions (walk)	
Airport Parking	International: 9 layover positions		

Melbourne Airport (Australia)



		2006	2007	2008
Aircraft Movements (Thousand)	Domestic	n/a	n/a	n/a
	International	22,746	23,290	25,090
	Total	n/a	n/a	n/a
Annual Passenger (Thousand)	Domestic	17,277	18,185	19,835
	International	4,291	4,565	4,732
	Total	21,568	22,750	24,567
Annual Cargo (Thousand)	Domestic	n/a	n/a	n/a
	International	n/a	n/a	n/a
	Total	n/a	n/a	n/a

Gold Coast Airport (Australia)



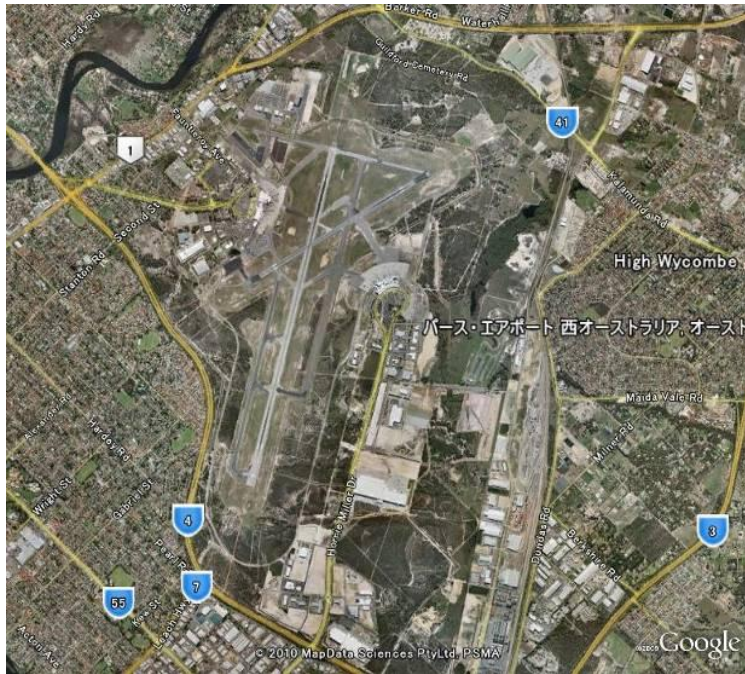
Airport Name	Gold Coast Airport, or Coolangatta Airport, (IATA: OOL, ICAO: YBCG)		
Airport Location	90km south east of Brisbane city center		
Airport Coordinate	28 09.54S 153 30.18E		
Runways	A runway	14/32	2,342m (7,684ft)
	B runway	17/35	582m (1,909ft)
Curfew	23:00 local to 06:00 local		
Passenger Terminal	Main Terminal (Domestic and international flights)	International: 3 positions up to 333 (walk), 2 positions up to 321 (walk) Passenger Flow Limitation: 1200 arriving and 1200 departing seats/hr Domestic: 8 gates (walk)	
	Terminal 2	Tiger Australia, 3 positions (walk)	
Airport Parking	Included in above		

Gold Coast Airport (Australia)



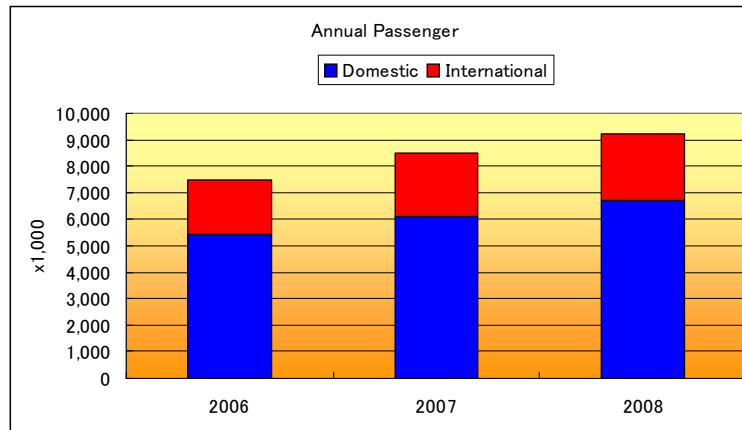
		2006	2007	2008
Aircraft Movements (Thousand)	Domestic	n/a	n/a	n/a
	International	1.966	1.826	3.004
	Total	n/a	n/a	n/a
Annual Passenger (Thousand)	Domestic	3,423	3,736	4,184
	International	193	211	339
	Total	3,616	3,947	4,523
Annual Cargo (Thousand)	Domestic	n/a	n/a	n/a
	International	n/a	n/a	n/a
	Total	n/a	n/a	n/a

Perth Airport (Australia)



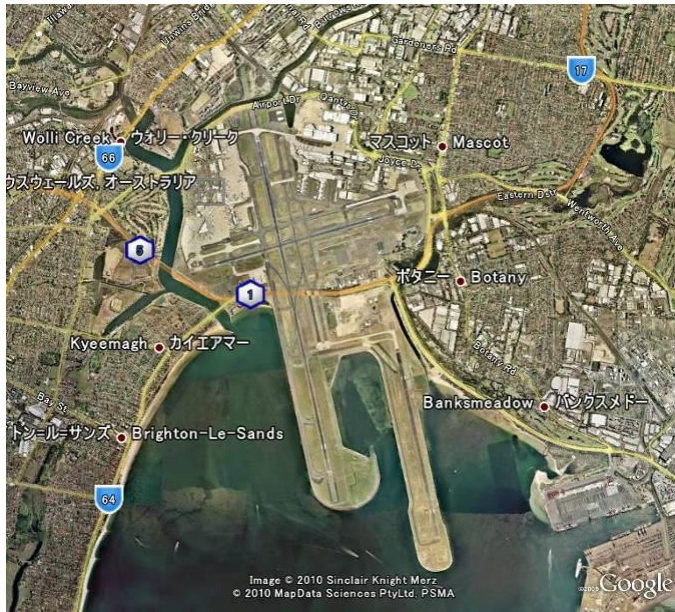
Airport Name	Perth Airport (IATA: PER, ICAO: YPPH)		
Airport Location	11km east of city center		
Airport Coordinate	31.56.10S 115.57.30E		
Runways	A runway	03/21	3,444m (11,299ft)
	B runway	06/24	2,163m (7,096ft)
Passenger Terminal	Terminal 1	International terminal located eastern side of airport - 6 gates Passenger Flow Limitation: 1100 arriving and 900 departing seats/hr	
	Terminal 2	Qantas Domestic – 9 gates (3 bridges)	
	Terminal 3	Common User domestic terminal, 4 gates (2 bridges, 2 walk)	
Airport Parking	11 layover and bus positions next to Terminal 2		

Perth Airport (Australia)



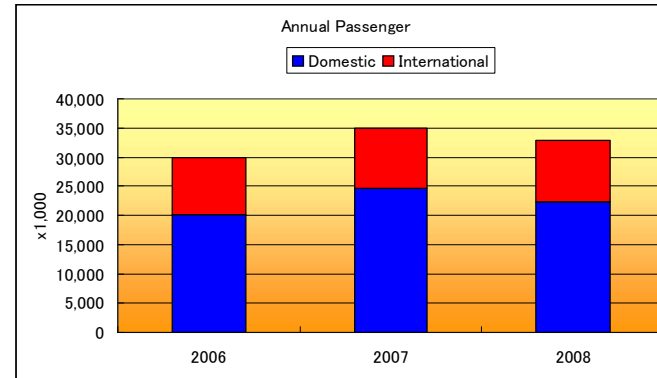
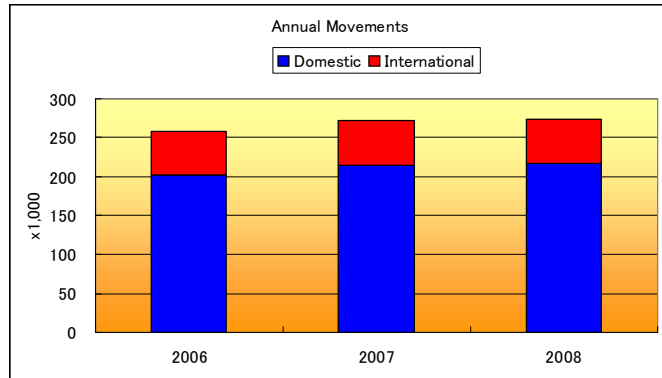
		2006	2007	2008
Aircraft Movements (Thousand)	Domestic	n/a	n/a	n/a
	International	10,892	12,910	14,952
	Total	n/a	n/a	n/a
Annual Passenger (Thousand)	Domestic	5,430	6,105	6,705
	International	2,035	2,374	2,533
	Total	7,465	8,479	9,238
Annual Cargo (Thousand)	Domestic	n/a	n/a	n/a
	International	n/a	n/a	n/a
	Total	n/a	n/a	n/a

Sydney Airport (Australia)



Airport Name	Sydney Airport (Kingsford Smith Airport) (IATA: SYD, ICAO: YSSY)		
Airport Location	9km south west of city center		
Airport Coordinate	33 56.46S 151 10.38E		
Runways	A runway	16R/34L	3,962m (12,999ft) Hourly movement cap: 80 movements, no more than 50 arrivals
	B runway	16L/34R	2,438m (7,999ft)
	C runway	07/25	2,530m (8,301ft)
Curfew	23:00 local to 06:05 local, no departures from runways 34 after 22:45		
Passenger Terminal	Terminal 1	31positions, 22 with bridges 9 bussing Passenger Flow limitation: 6210 arriving and 5400 departing seats/hr.	
	Terminal 2	Common User Terminal: 38 positions, 9 with bridges 29 bus or walk Passenger Flow Limitation: 2800 arriving seats and 2520 departing seats/hr	
	Terminal 3	Qantas Domestic Terminal, 16 positions, 14 bridges, 2 bus	
Airport Parking	Layover parking positions: International 7 plus 2 dedicated freighter positions, Domestic Common User 6 positions		

Sydney Airport (Australia)



		2006	2007	2008
Aircraft Movements (Thousand)	Domestic	202.248	214.534	216.448
	International	54.884	57.656	57,218
	Total	257.132	272.2	273.666
Annual Passenger (Thousand)	Domestic	20,119	24,585	22,348
	International	9,866	10,378	10,553
	Total	29,985	34,963	32,901
Annual Cargo (Thousand)	Domestic	n/a	n/a	n/a
	International	n/a	n/a	n/a
	Total	n/a	n/a	n/a

Hobart Airport (Australia)



Airport Name	Hobart International Airport (IATA: HBA, ICAO: YMHB)		
Airport Location	15km north east of city center (Hobart), Tasmania		
Airport Coordinate	42 50.10S 147 30.32E		
Runways	A runway	12/30	2,251m (7,390ft)
Passenger Terminal	International Terminal	At present the Terminal is used for domestic arrivals and occasional charter airline flights	
	Domestic Terminal	4 parking bays for narrow-body (Boeing 737/Airbus A320-sized) aircraft	
Airport Parking			

Hobart Airport (Australia)

		2006	2007	2008
Aircraft Movements (Thousand)	Domestic			
	International			
	Total			
Annual Passenger (Thousand)	Domestic	1,618	1,664	1,831
	International			
	Total	1,618	1,664	1,831
Annual Cargo (Thousand)	Domestic			
	International			
	Total			

Norfolk Island Airport (Australia)



Airport Name	Norfolk Island international Airport (IATA: NLK, ICAO: YSNF)		
Airport Location	The only airport on Norfolk Island, an external territory of Australia.		
Airport Coordinate	29 02.30S 167 56.20E		
Runways	A runway	11/29	1,950m (6,398ft)
	B runway	04/22	1,435m (4,708ft)
Passenger Terminal	Terminal 1		
Airport Parking			

Norfolk Island Airport (Australia)

		2006	2007	2008
Aircraft Movements (Thousand)	Domestic			
	International			
	Total			
Annual Passenger (Thousand)	Domestic			
	International			
	Total			
Annual Cargo (Thousand)	Domestic			
	International			
	Total			

Port Hedland Airport (Australia)

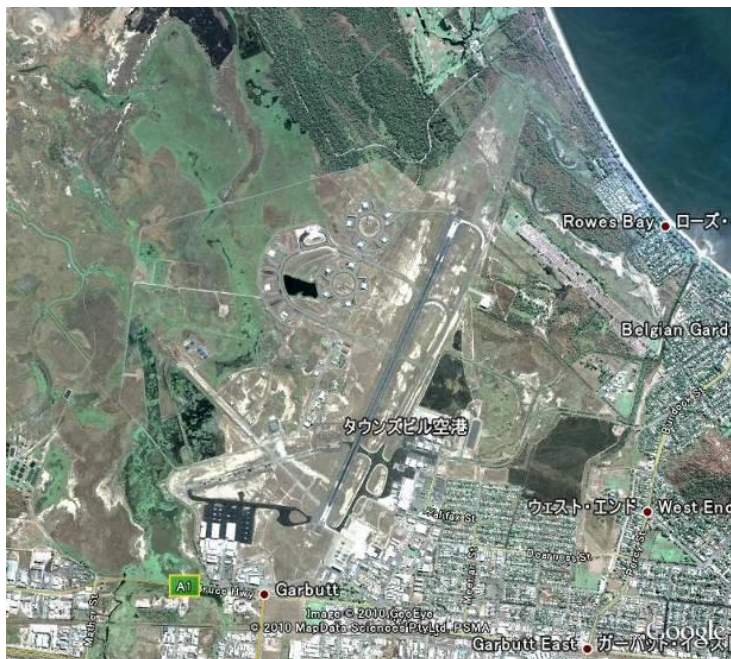


Airport Name	Port Hedland International Airport (IATA: PHE, ICAO: YPPD)		
Airport Location	9km south east of city center		
Airport Coordinate	20 22.40S 118 37.35E		
Runways	A runway	14/32	2,500m (8,202ft)
	B runway	18/36	1,000m (3,281ft)
Passenger Terminal	Terminal 1		
Airport Parking			

Port Hedland Airport (Australia)

		2006	2007	2008
Aircraft Movements (Thousand)	Domestic			
	International			
	Total			
Annual Passenger (Thousand)	Domestic			
	International			
	Total			
Annual Cargo (Thousand)	Domestic			
	International			
	Total			

Townsville Airport (Australia)



Airport Name	Townsville Airport (IATA: TSV, ICAO: YBTL)		
Airport Location	6km west of city center		
Airport Coordinate	19 15.09S 146 45.55E		
Runways	A runway	01/19	2,438m (7,999ft)
	B runway	07/25	1,100m (3,609ft)
Passenger Terminal	Terminal 1	Domestic Terminal for Australian domestic and regional airlines	
Airport Parking			

Townsville Airport (Australia)

		2006	2007	2008
Aircraft Movements (Thousand)	Domestic			
	International			
	Total			
Annual Passenger (Thousand)	Domestic			1,412
	International			
	Total			1,412
Annual Cargo (Thousand)	Domestic			
	International			
	Total			